



REGIONAL FOCUS

ON THE INTERGOVERNMENTAL AUTHORITY
ON DEVELOPMENT (IGAD) MEMBER STATES

2024 GLOBAL REPORT ON FOOD CRISES

JOINT ANALYSIS FOR BETTER DECISIONS



FSIN-IGAD collaboration



The GRFC and the IGAD Focus: public good based on data



Shared values: technical rigor, consensus and partnership



Establishes reference points globally and regionally



Informs decisions: resource allocation, policy development and advocacy



FSIN-IGAD collaboration



The GRFC and the IGAD Regional
Focus: public goods based on data



Shared values: technical rigor,
consensus and partnership



Establishes reference points globally
and regionally



Informs decisions: resource allocation, policy
development and advocacy



FSIN-IGAD collaboration



The GRFC and the IGAD Focus:
data-based public goods



Shared values: technical rigour,
partnership and consensus



Establishes reference points globally
and regionally



Informs decisions: resource allocation, policy
development and advocacy



FSIN-IGAD collaboration



The GRFC and the IGAD Focus:
data-based public goods



Shared values: technical rigour,
consensus and partnership



Establish reference points
globally and regionally



Informs decisions: resource allocation, policy
development and advocacy



FSIN-IGAD collaboration



The GRFC and the IGAD Focus:
data-based public goods



Shared values: technical rigour,
consensus and partnership



Establish reference points
globally and regionally



Informs decisions: resource allocation,
policy development and advocacy



2024 Global Report on Food Crises



2023:

73

Food crises

59

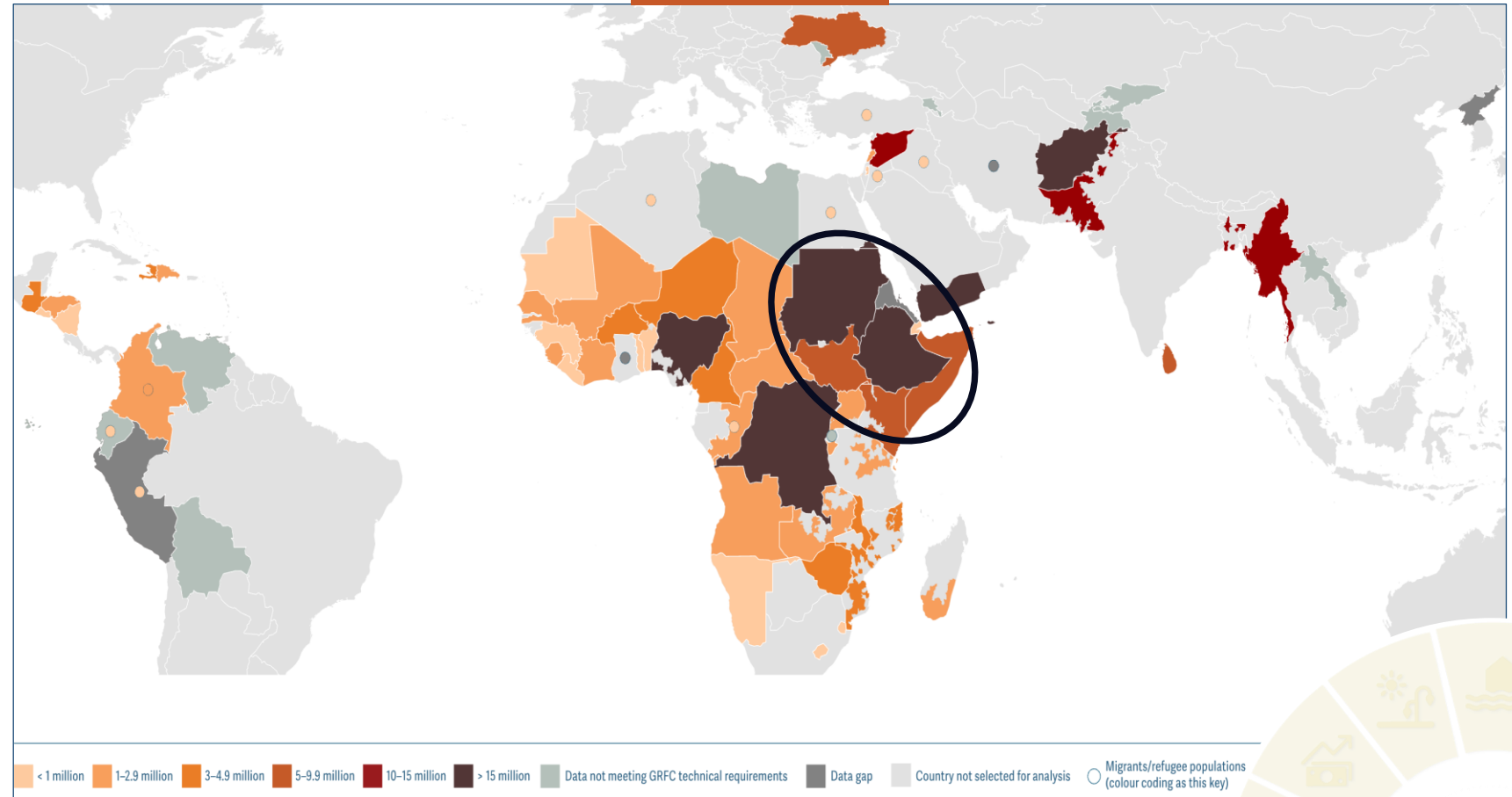
With data



281.6M

People in IPC/CH
Phase 3 Plus

Magnitude



61.9M in IGAD Member States

2023:

73

Food crises

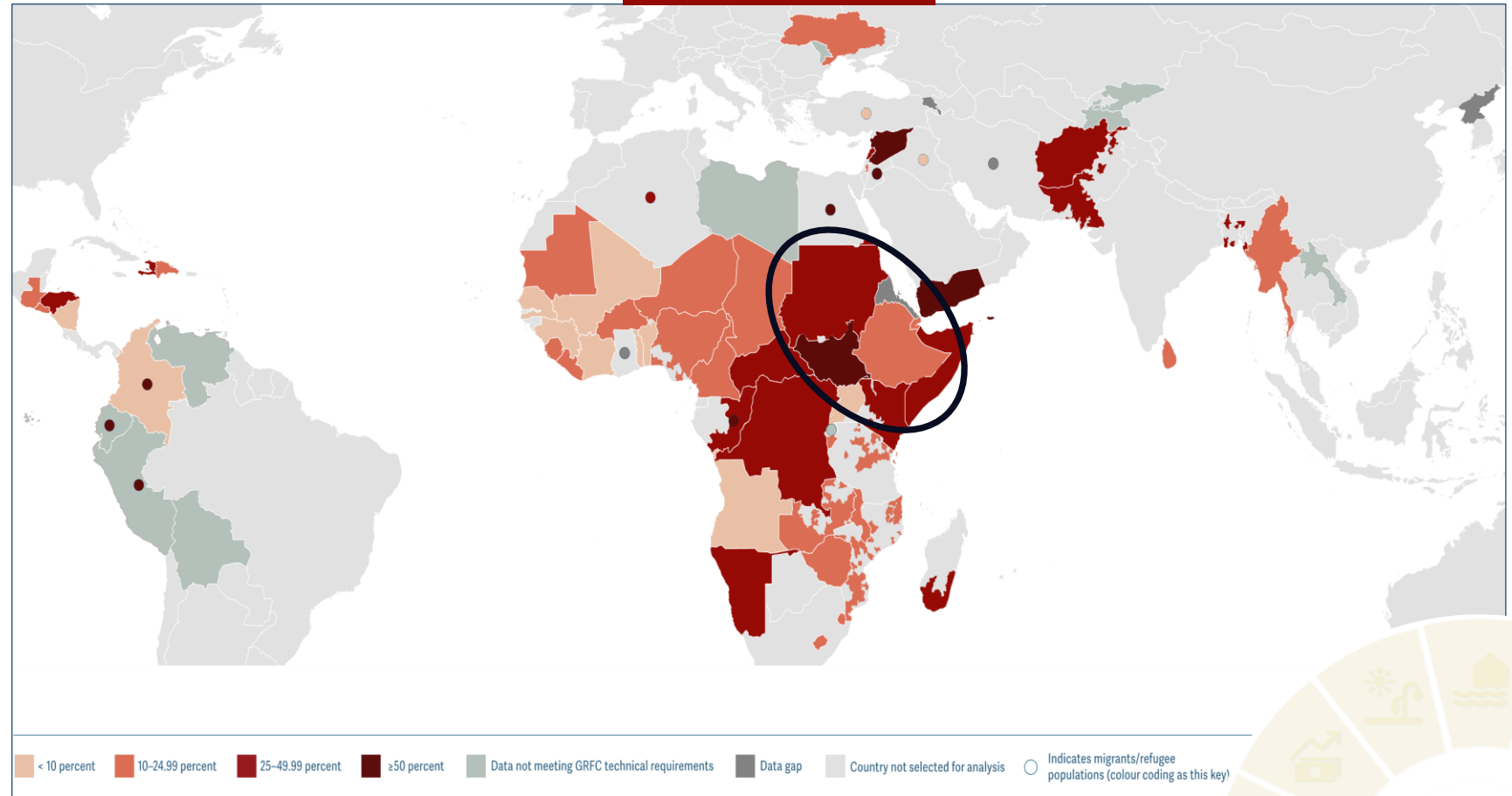
59

With data



21.5%
of the
analysed
population

Share



**24% of the analysed population
in IGAD Member States**

Severity of acute food insecurity in 41 countries with IPC/CH analyses

Action for disaster risk reduction
and livelihoods protection

Urgent action required

Phase 1
Minimal

Phase 2
Stressed

Phase 3
Crisis

Phase 4
Emergency

Phase 5
Catastrophe/Famine



**Over 0.7M
people**

PALESTINE (GAZA STRIP)

576 600

SOUTH SUDAN

43 000

BURKINA FASO

42 700

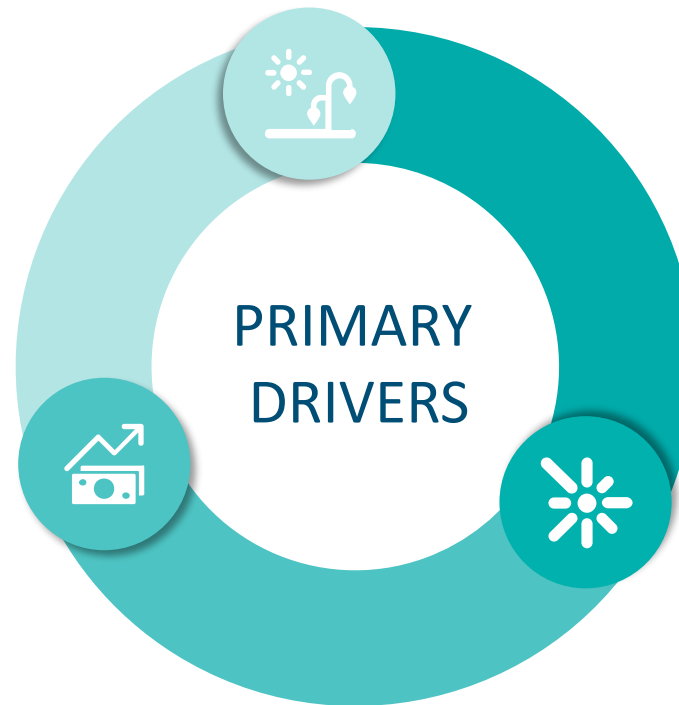
SOMALIA

40 400

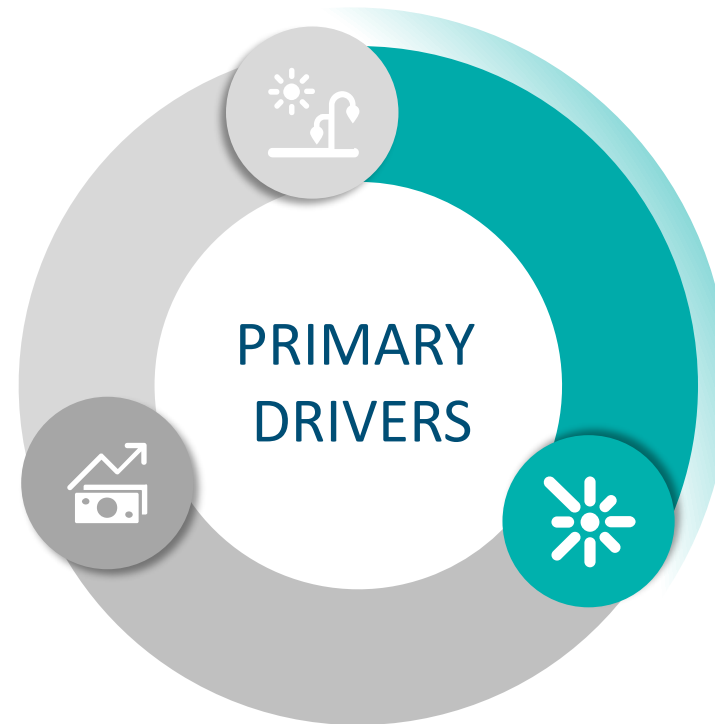
MALI

2 500

Drivers of food crises are **interlinked** and **underpinned** by structural vulnerabilities



Drivers of food crises are **interlinked** and **underpinned** by structural vulnerabilities

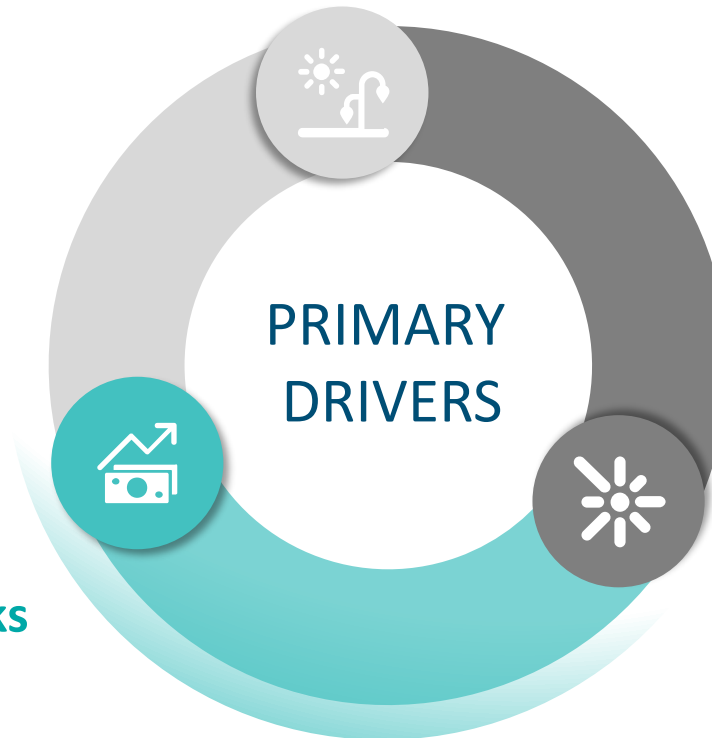


Conflict/insecurity
20 countries

1 IGAD Member State: Sudan



Drivers of food crises are **interlinked** and **underpinned** by structural vulnerabilities



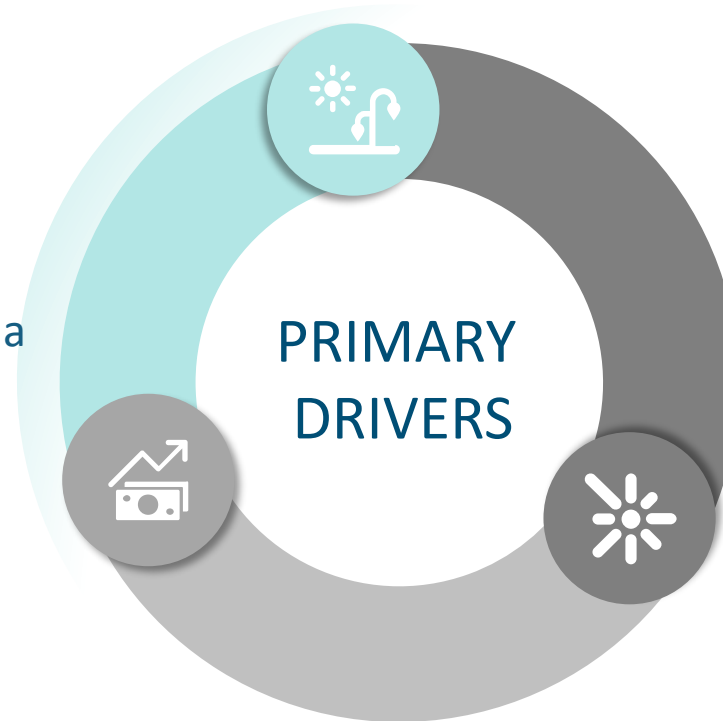
Economic shocks
21 countries

2 IGAD Member States: Djibouti and South Sudan

Drivers of food crises are **interlinked** and **underpinned** by structural vulnerabilities

Weather extremes 18 countries

4 IGAD Member States:
Ethiopia, Kenya, Somalia and Uganda



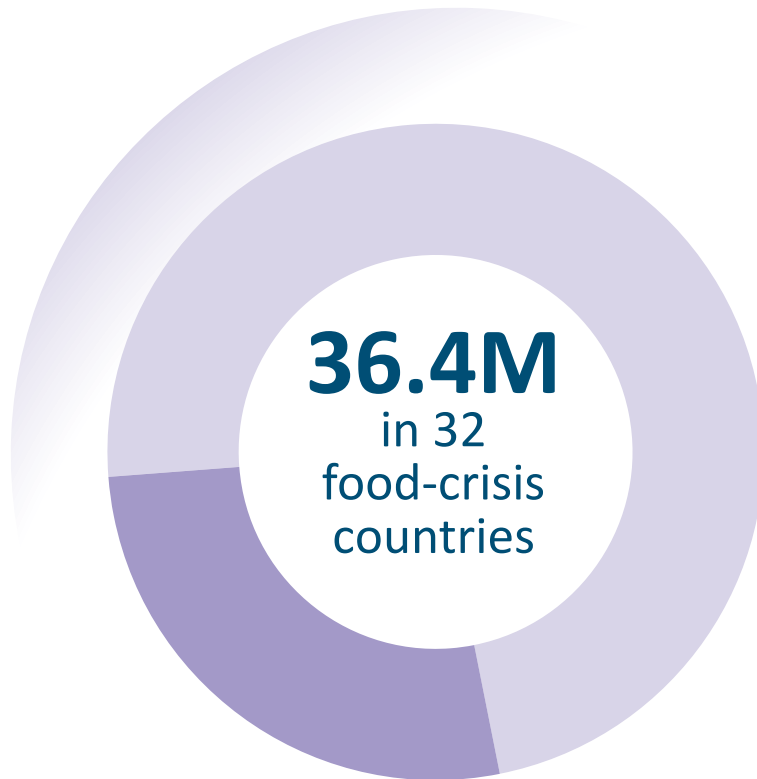
An alarming nutrition situation



26.6M
children
under 5 years
with **MAM**



9.8M
children
under 5 years
with **SAM**



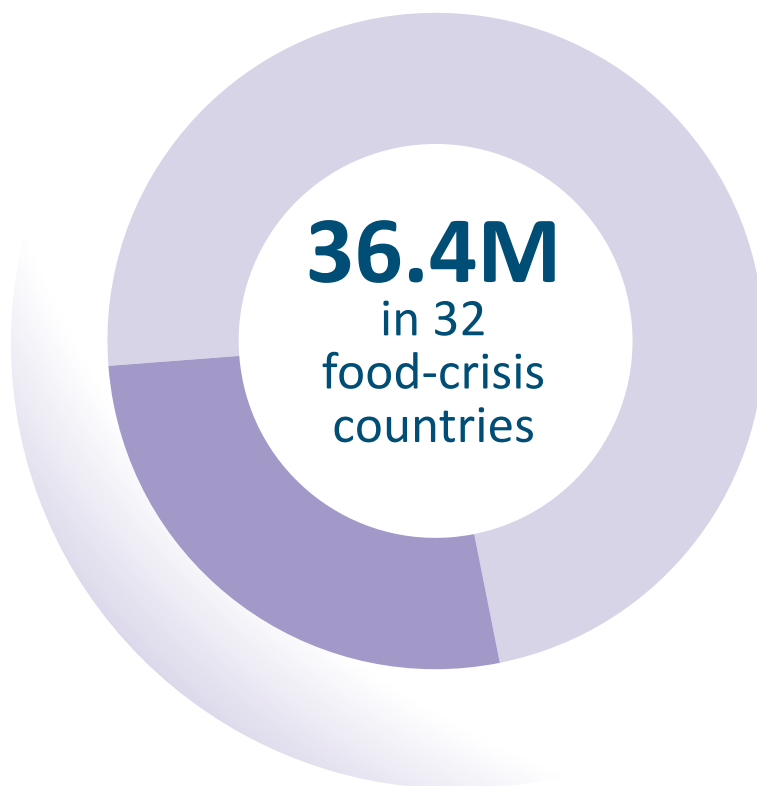
An alarming nutrition situation



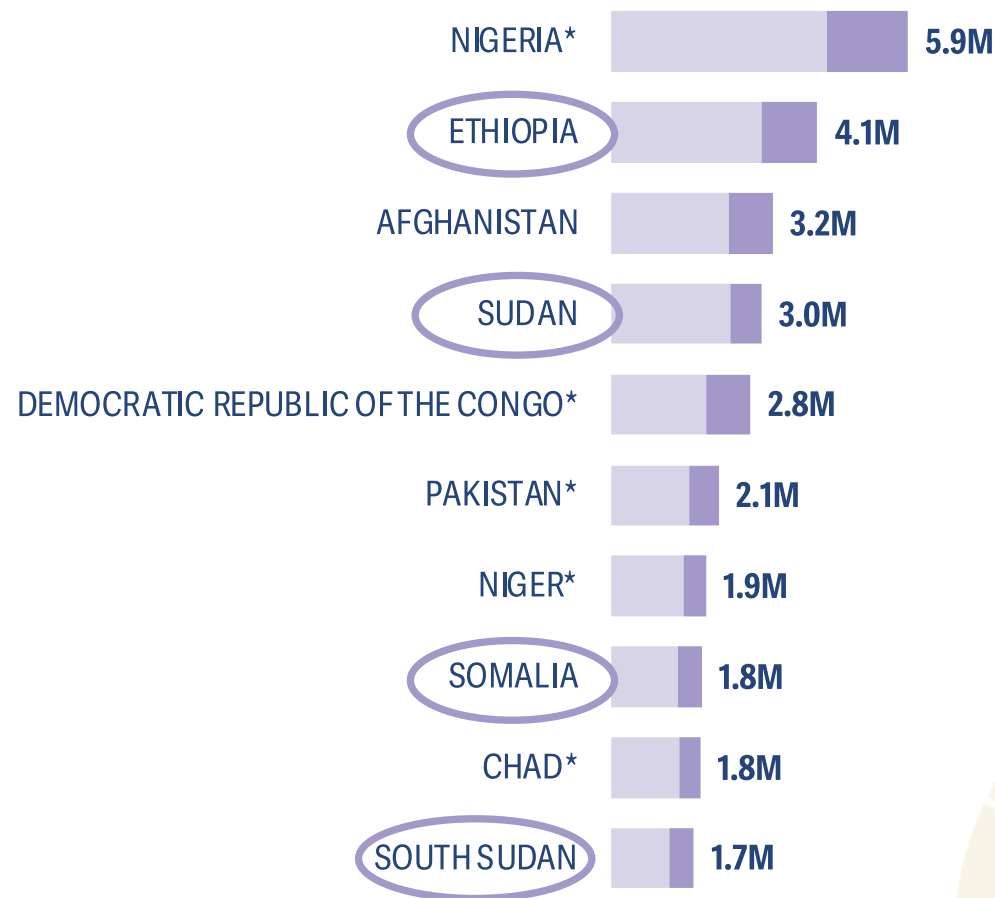
26.6M
children
under 5 years
with **MAM**



9.8M
children
under 5 years
with **SAM**



Ten food crises with the highest number of acutely malnourished children



Moderate acute malnutrition



Severe acute malnutrition

2024 GLOBAL REPORT
ON FOOD CRISES

JOINT ANALYSIS FOR BETTER DECISIONS

Another year of increasing numbers of displaced persons in food-crisis countries



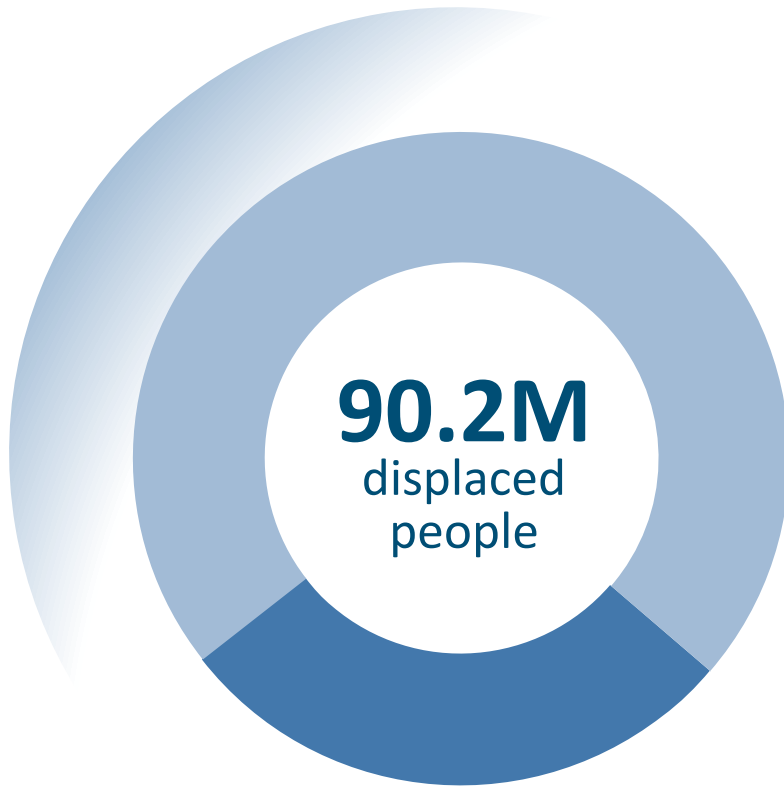
64.3M

IDPs in 38
countries



26M

refugees and
asylum-seekers
in 56 countries



Another year of increasing numbers of displaced persons in food-crisis countries



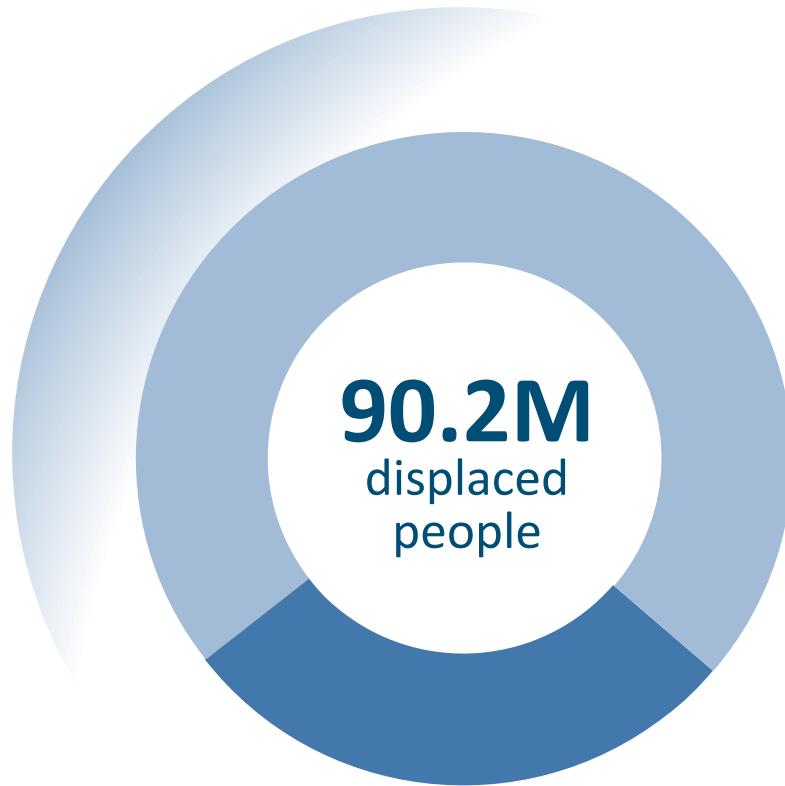
64.3M

IDPs in **38**
countries



26M

refugees and
asylum-seekers
in **56** countries



Sudan became the largest
internal displacement crisis

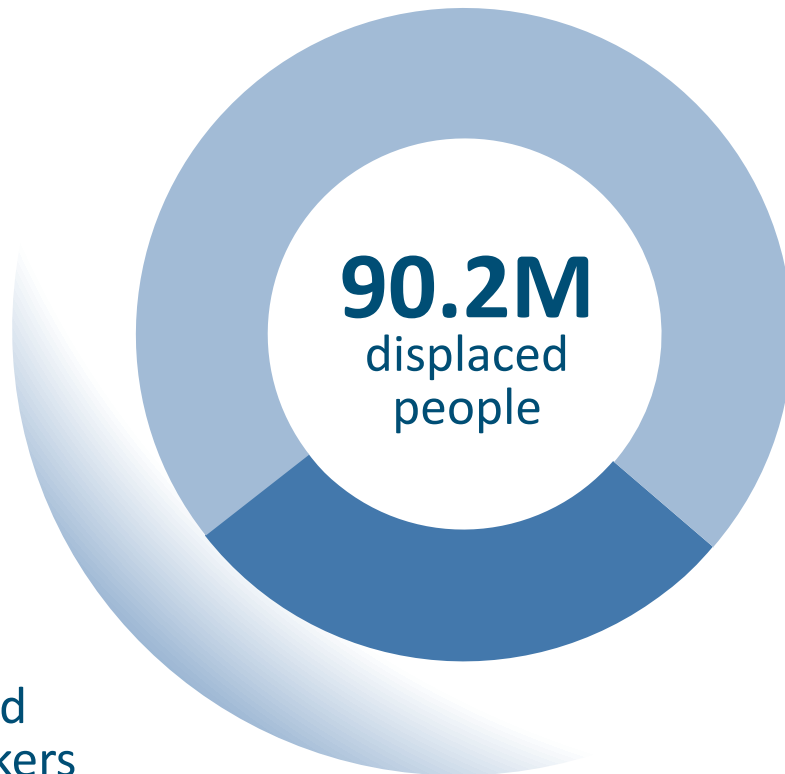
Another year of increasing numbers of displaced persons in food-crisis countries



64.3M
IDPs in **38**
countries



26M
refugees and
asylum-seekers
in **56** countries



Sudan became the largest
internal displacement crisis



The highest proportion (75–
85%) of IDPs was in the **Gaza**
Strip

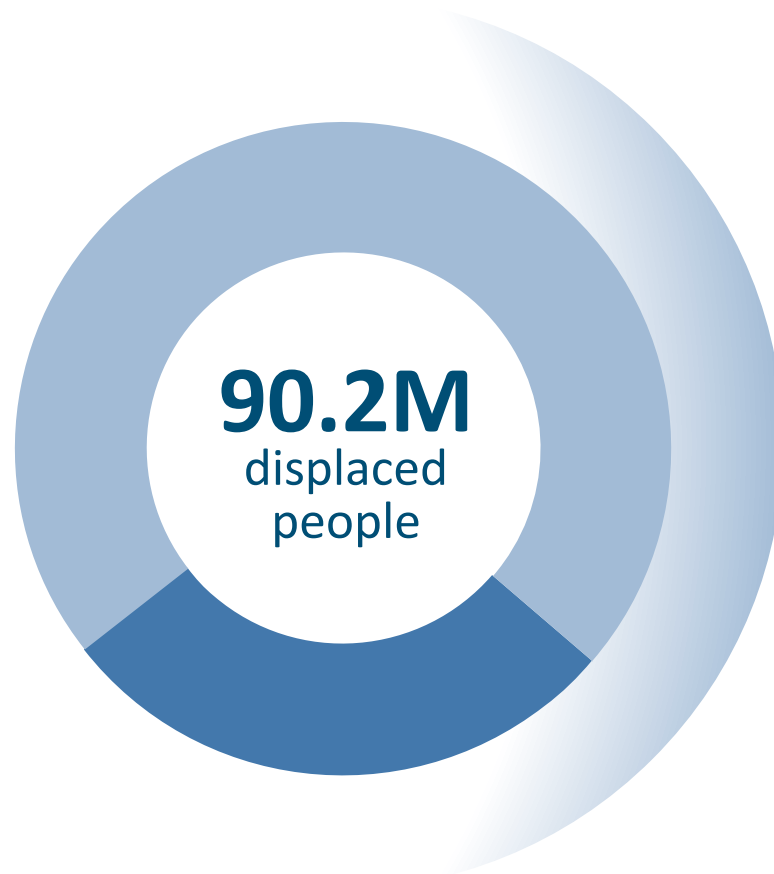
Another year of increasing numbers of displaced persons in food-crisis countries



64.3M
IDPs in **38**
countries



26M
refugees and
asylum-seekers
in **56** countries



Sudan became the largest
internal displacement crisis



The highest proportion (75–
85%) of IDPs was in the **Gaza
Strip**

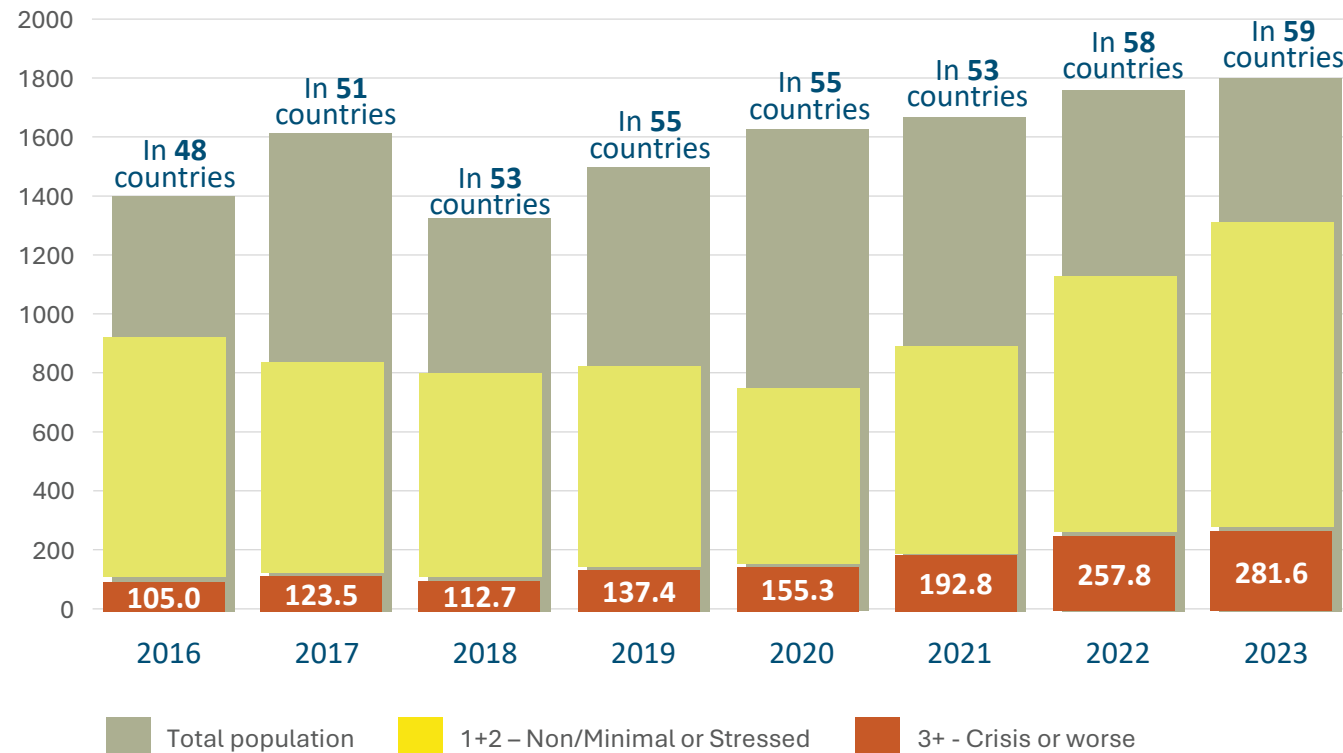


In some contexts over 60%
face high levels of acute food
insecurity

How does 2023 compare with previous years?

Increase
in **coverage**

Increase
in **numbers**

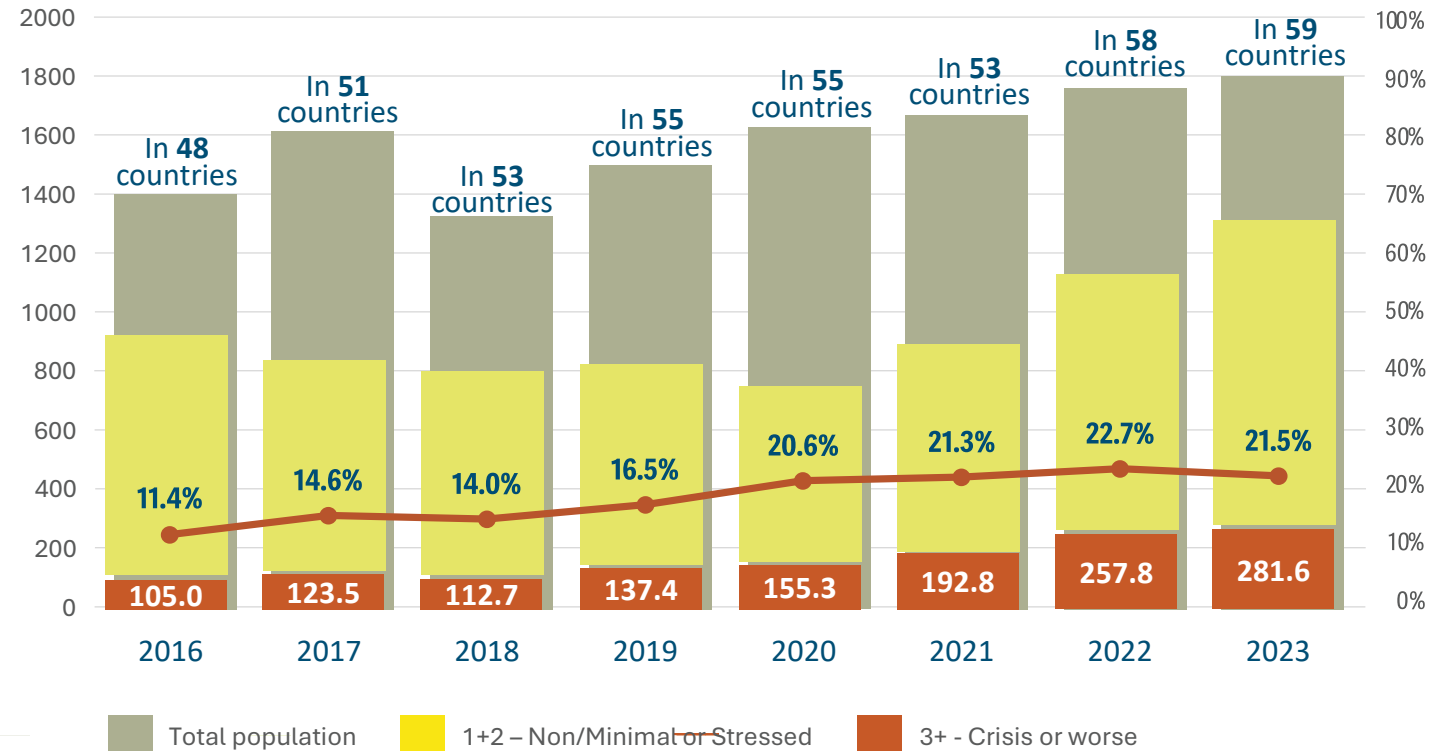


How does 2023 compare with previous years?

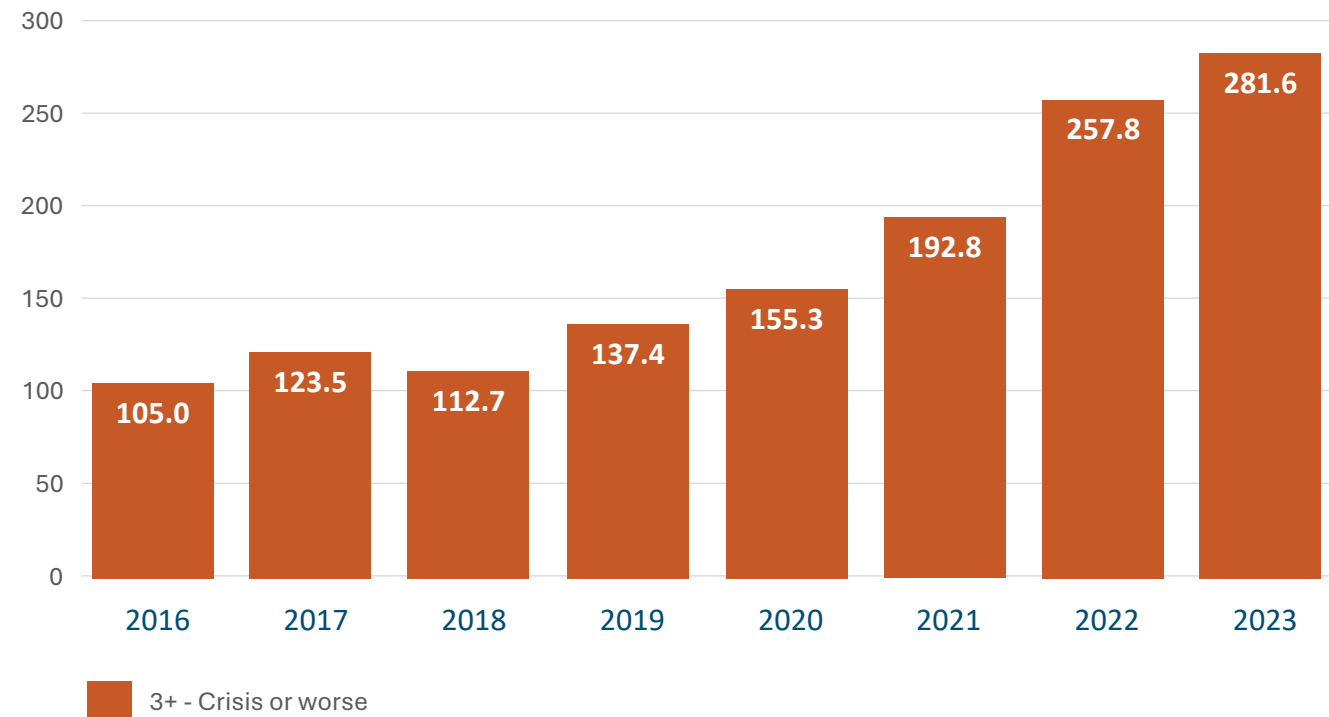
Increase
in **coverage**

Increase
in **numbers**

Increase
in **share**

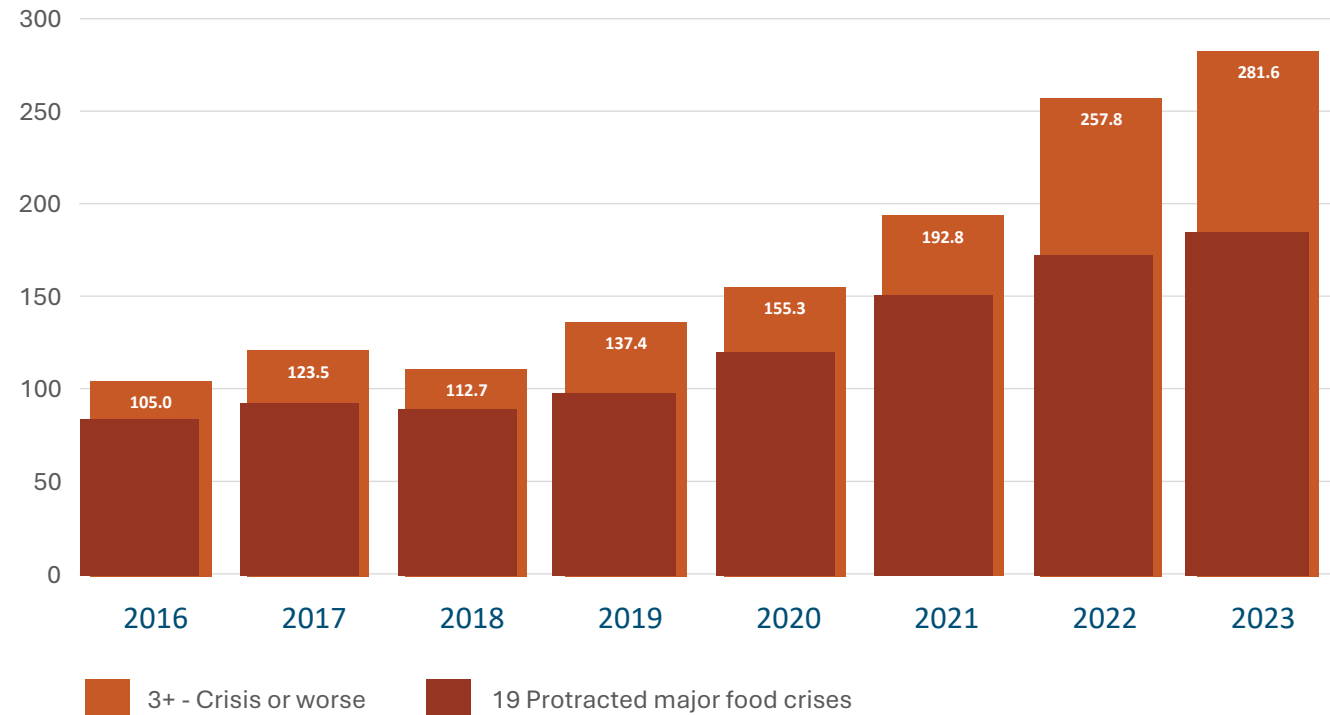


Most people facing high acute food insecurity are in 19 protracted major food crises



Most people facing high acute food insecurity are in 19 protracted major food crises

IGAD Member States:
Ethiopia, Somalia,
South Sudan, Sudan





REGIONAL FOCUS

ON THE INTERGOVERNMENTAL AUTHORITY ON DEVELOPMENT (IGAD) MEMBER STATES

2024 GLOBAL REPORT ON FOOD CRISES

JOINT ANALYSIS FOR BETTER DECISIONS

7 countries with data by mid-2024



62.9M

People in IPC/CH 3+



Improvements:

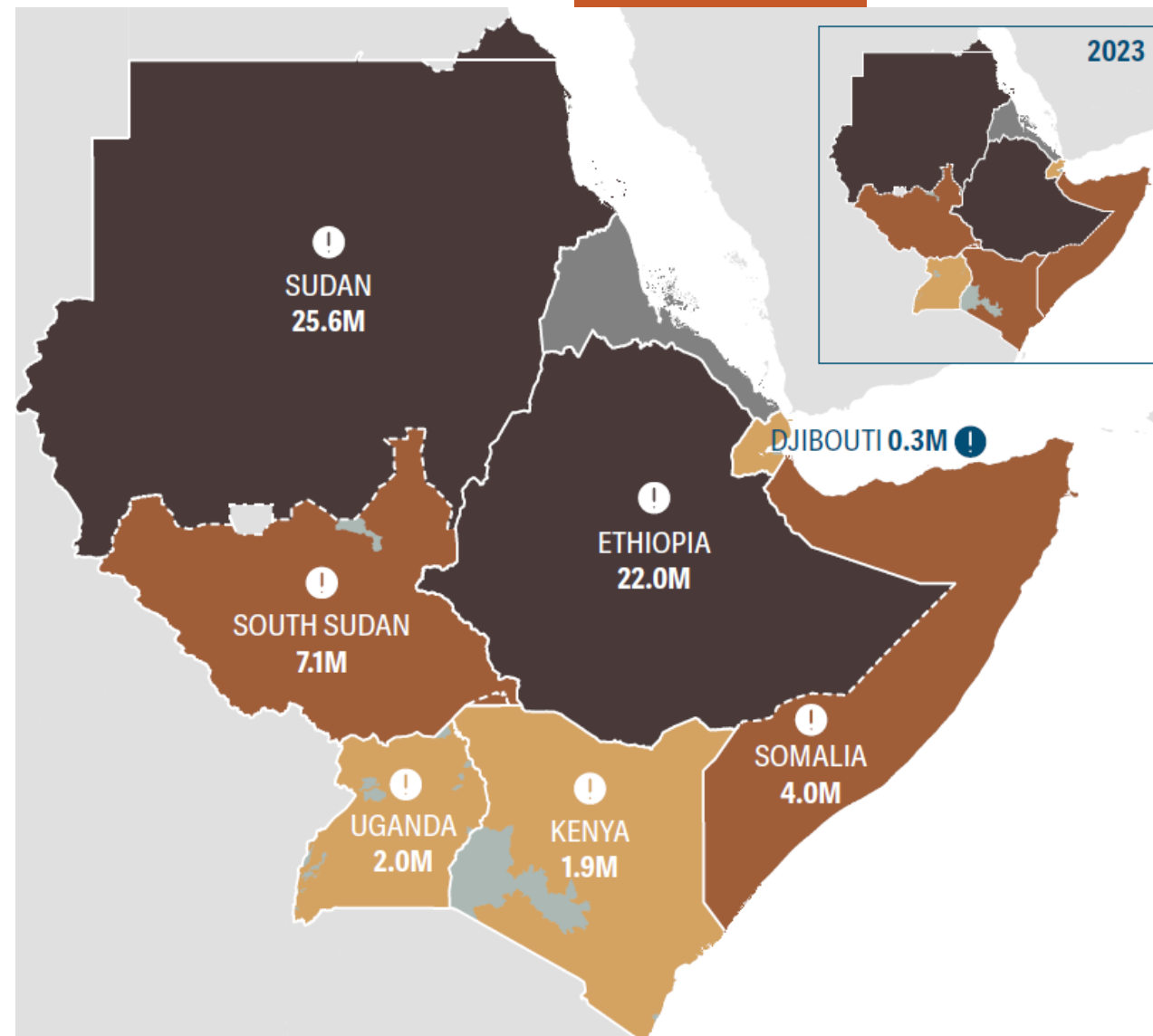
Kenya, Somalia, South Sudan



Deteriorations:

Sudan, Ethiopia, Uganda

Magnitude

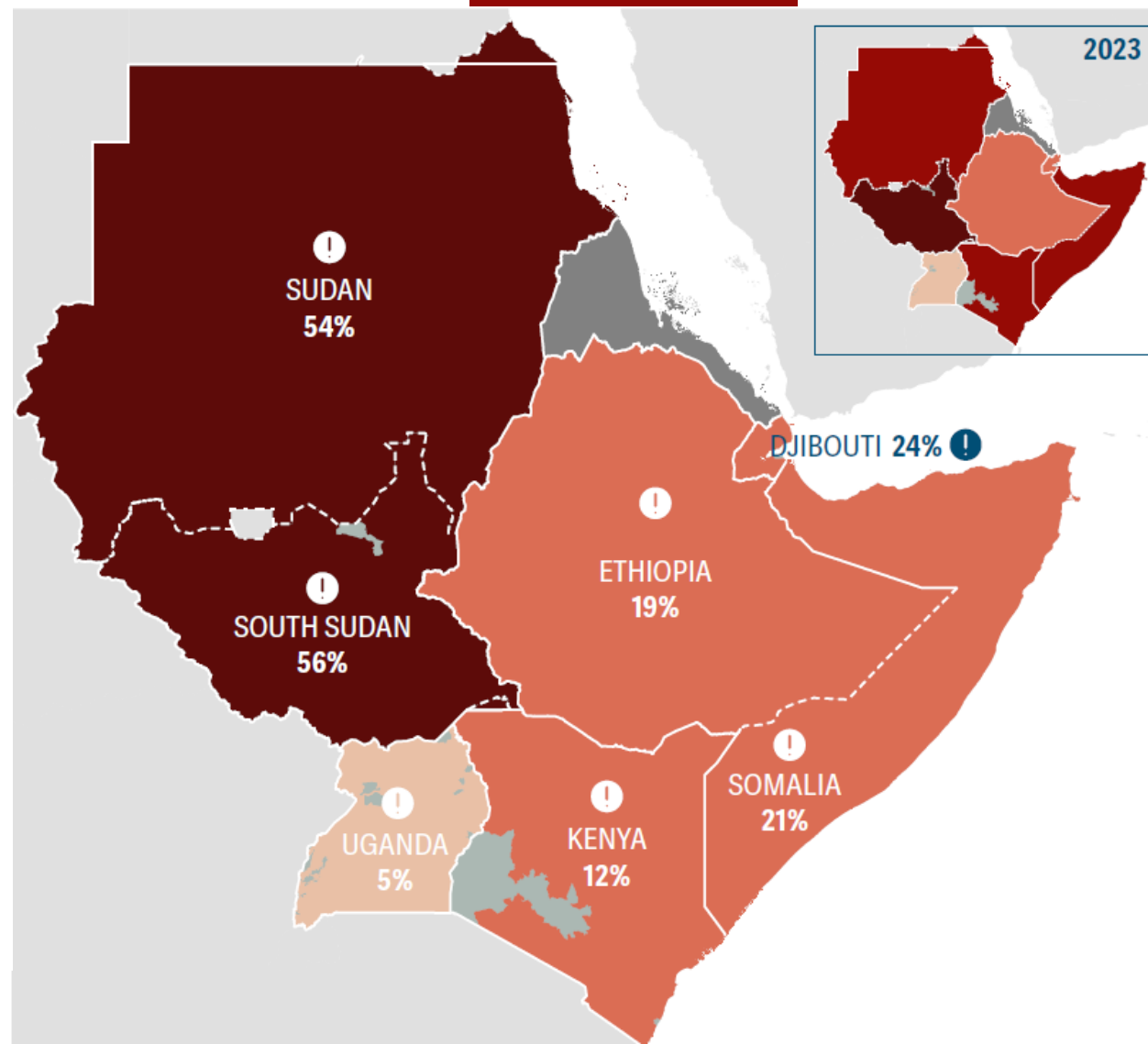


7 countries with data by mid-2024



25%
Of the analysed population

Share



Severity of acute food insecurity in Djibouti, Kenya, Somalia, South Sudan and the Sudan



Severity of acute food insecurity in Djibouti, Kenya, Somalia, South Sudan and the Sudan



834 300 people in Catastrophe
755 300 in the Sudan and 79 000 South Sudan

Famine ongoing and risk of Famine in the Sudan

Severity of acute food insecurity in Djibouti, Kenya, Somalia, South Sudan and the Sudan



12 million people in Emergency (IPC Phase 4)

Severity of acute food insecurity in Djibouti, Kenya, Somalia, South Sudan and the Sudan



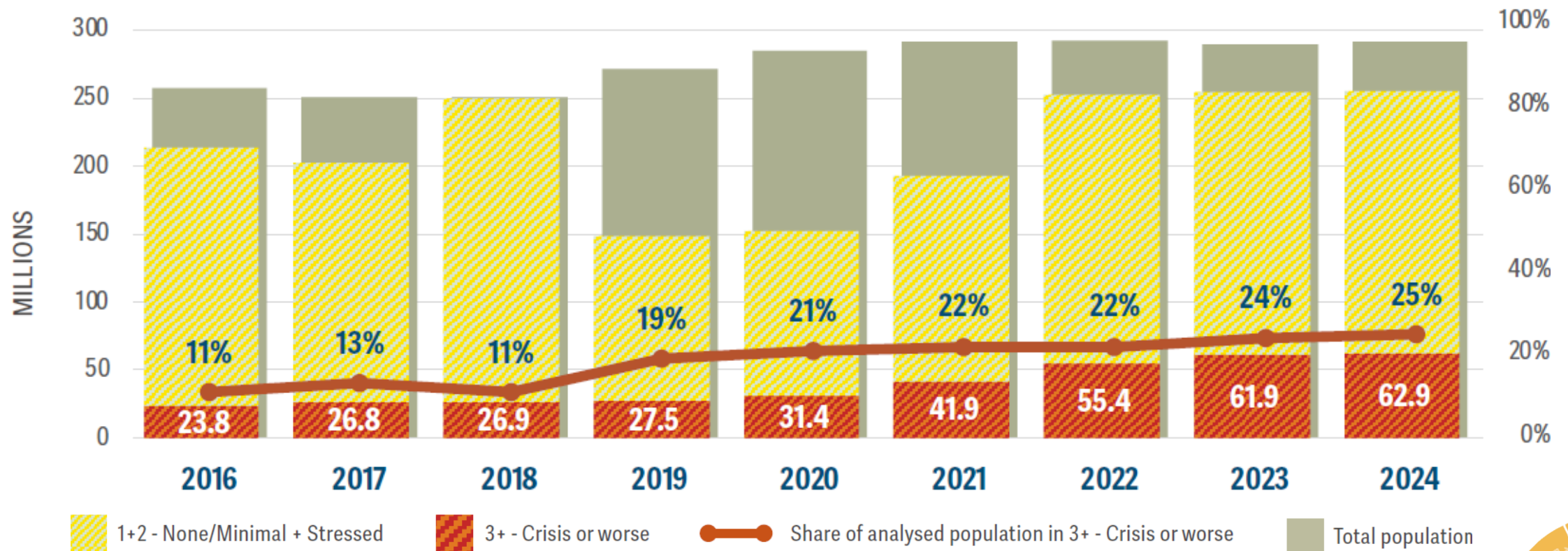
26.1 million people in Crisis (IPC Phase 3)

Severity of acute food insecurity in Djibouti, Kenya, Somalia, South Sudan and the Sudan



30.8 million people in Stressed (IPC Phase 2)

Hunger levels in IGAD region have reached an all-time high



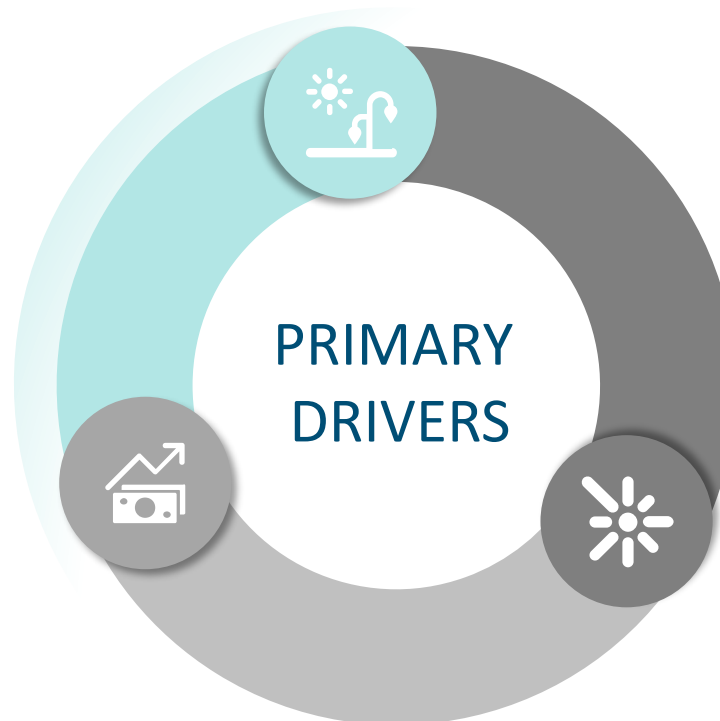
Repeated shocks on top of structural vulnerabilities erode household resilience



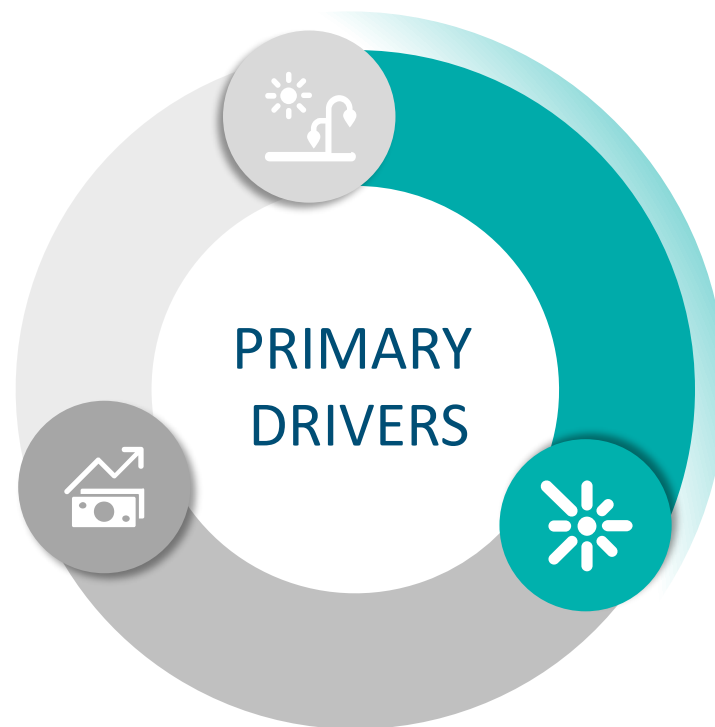
Repeated shocks on top of structural vulnerabilities erode household resilience

Weather extremes

Improved rainfall since early 2023 aided drought recovery in the region, but also caused severe flooding



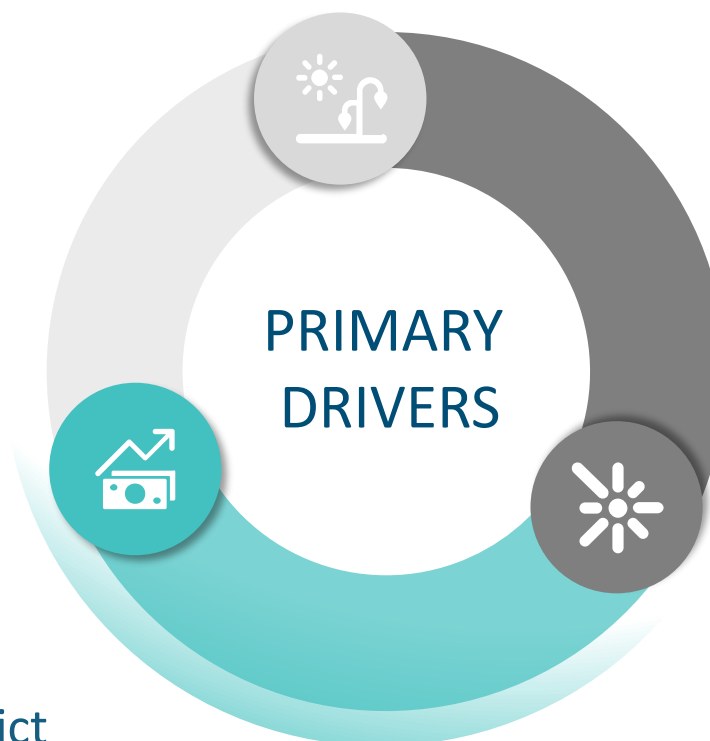
Repeated shocks on top of structural vulnerabilities erode household resilience



Conflict/insecurity

In the Sudan, and localized parts of Ethiopia, Kenya, Somalia, South Sudan and Uganda

Repeated shocks on top of structural vulnerabilities erode household resilience



Economic shocks

Adverse macroeconomic conditions continued to restrict food access across almost all the countries

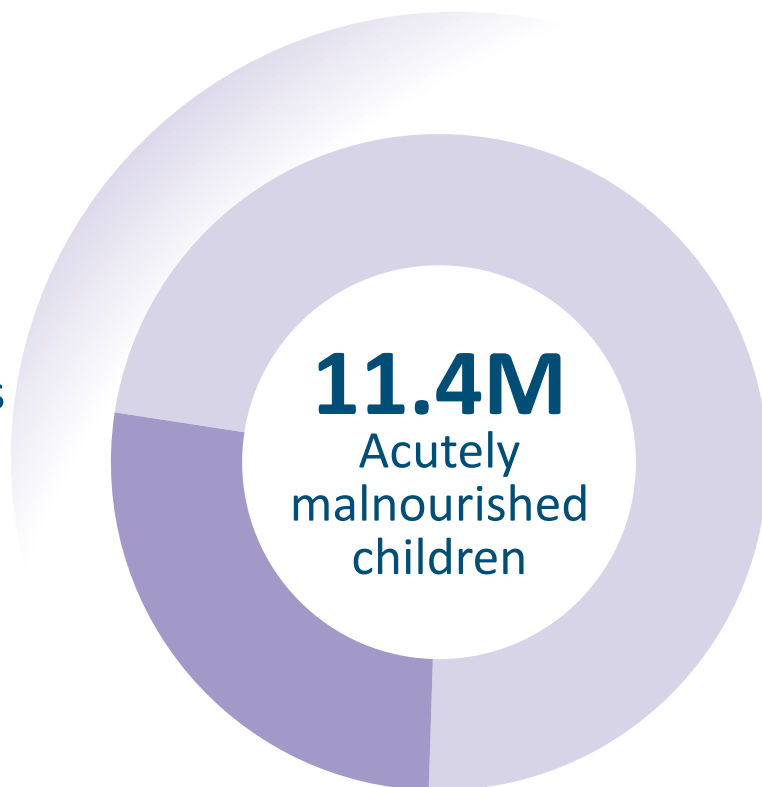
The magnitude and severity of acute malnutrition worsened since 2023



8.6M
children
under 5 years
with **MAM**



2.8M
children
under 5 years
with **SAM**



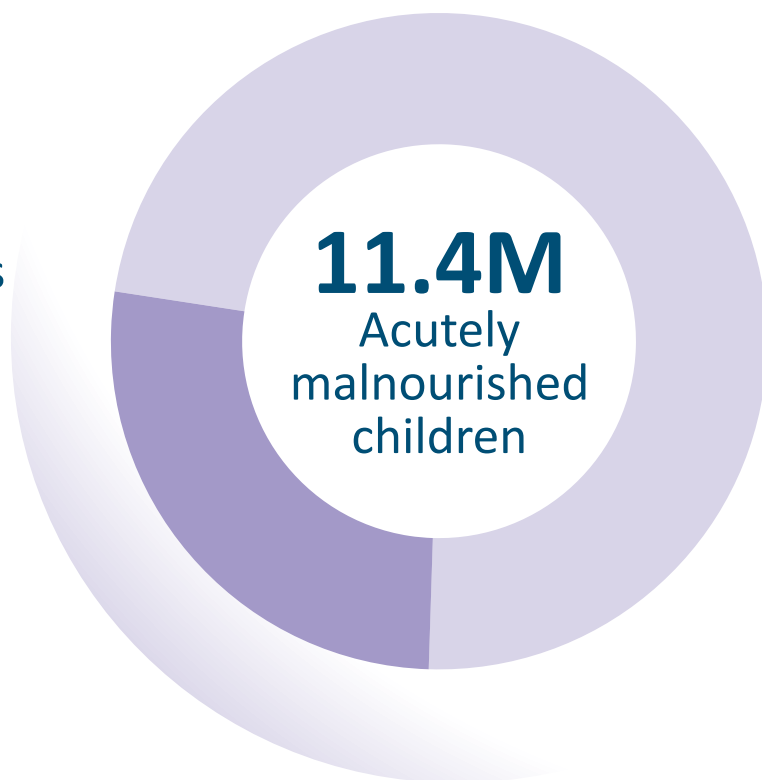
The magnitude and severity of acute malnutrition worsened since 2023



8.6M
children
under 5 years
with **MAM**



2.8M
children
under 5 years
with **SAM**



3.9M pregnant and breastfeeding women with
acute malnutrition in 2024.

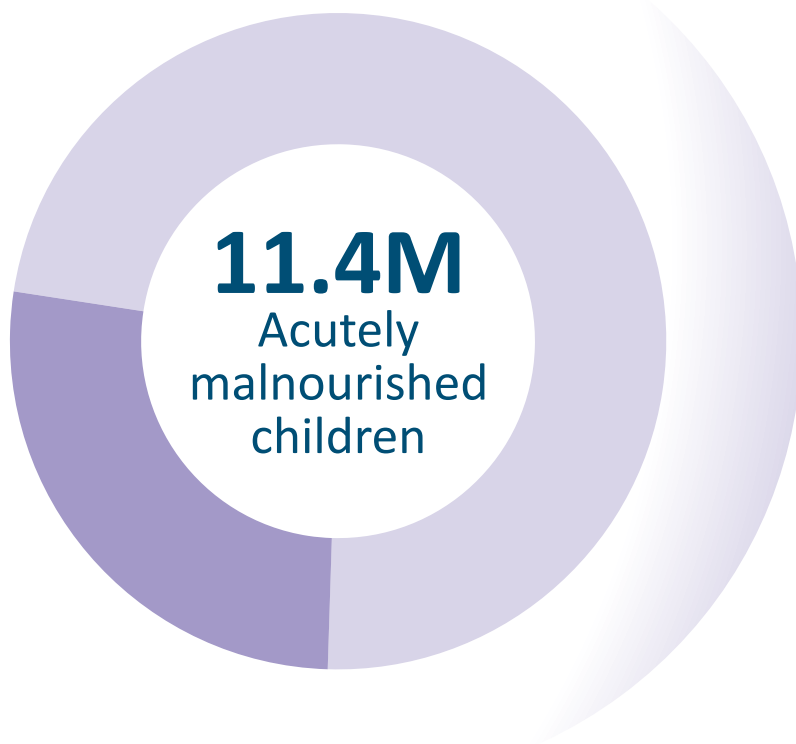
The magnitude and severity of acute malnutrition worsened since 2023



8.6M
children
under 5 years
with **MAM**



2.8M
children
under 5 years
with **SAM**



3.9M pregnant and breastfeeding women with acute malnutrition in 2024.



Insufficient food consumption, inadequate services, and poor practices exacerbated by escalating conflicts, cumulative effects of weather extremes, and economic shocks.



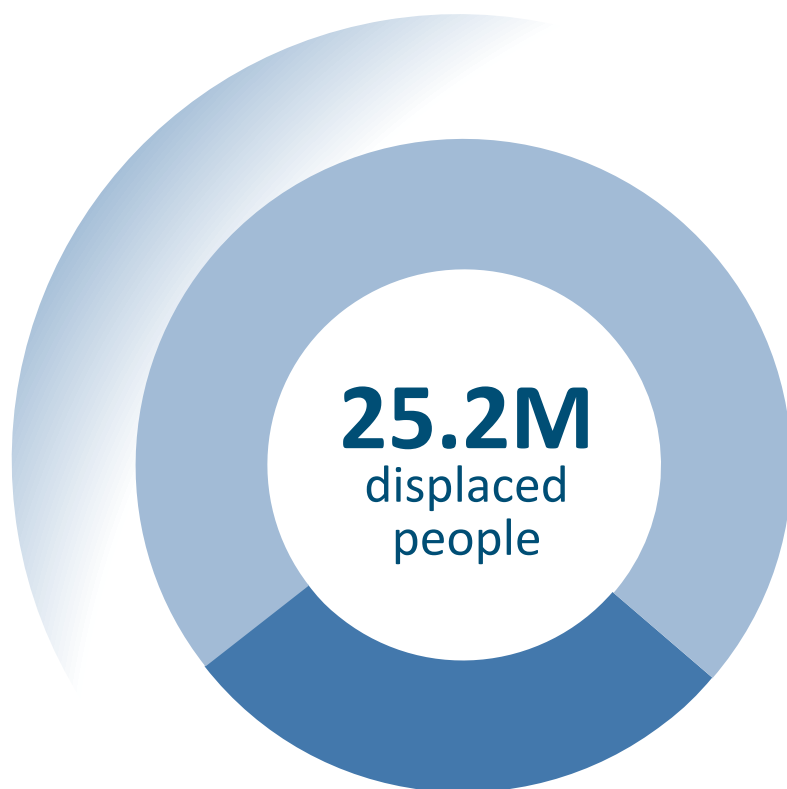
Highest level of forced displacement on record.



20.2M
IDPs



5M
refugees and
asylum-seekers



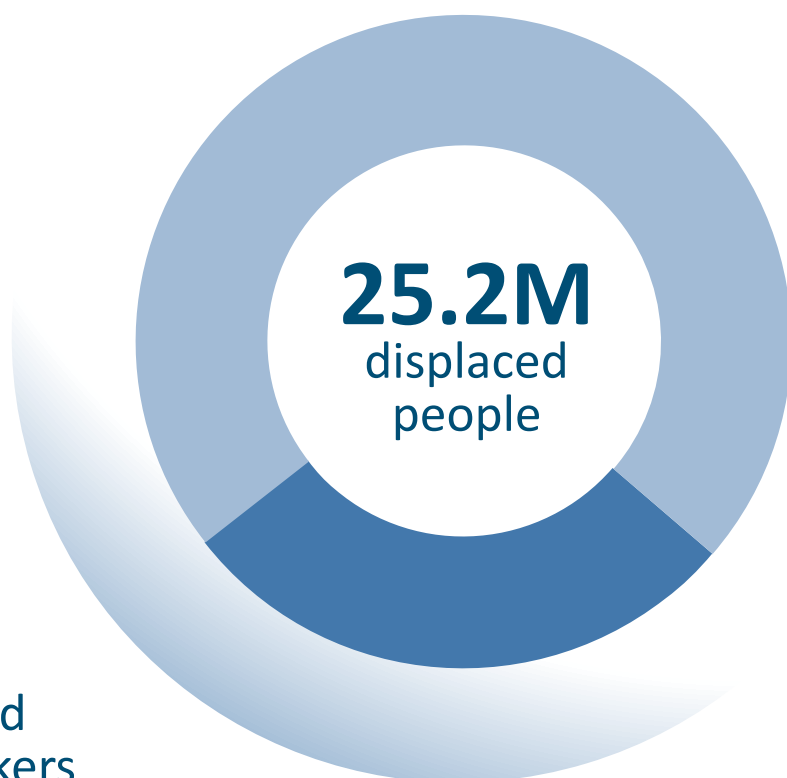
Highest level of forced displacement on record.



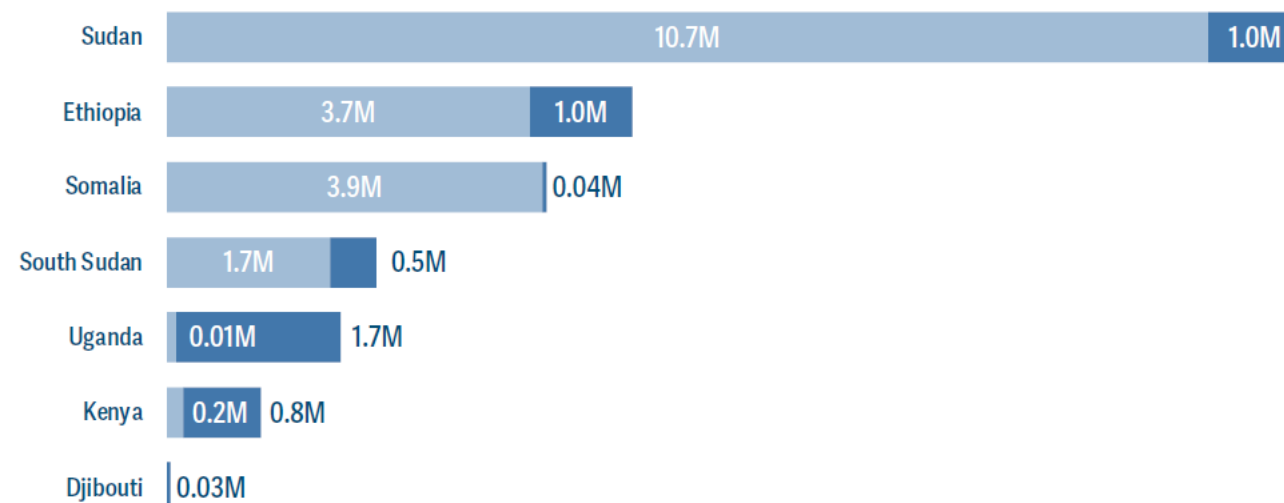
20.2M
IDPs



5M
refugees and
asylum-seekers



Forcibly displaced people by country





Spotlight on Sudan

-  Famine in Zamzam IDP camp
-  Acute food insecurity in the Sudan has reached the highest in IPC history
-  Major impact on the country's agriculture sector
-  Critical levels of acute malnutrition threaten lives of children and women
-  The world's largest internal displacement crisis
-  A crisis beyond the country's borders

The IGAD region remains one of the most vulnerable regions across the globe

Through development and humanitarian actions, notable progress has been made

Nonetheless, much still needs to be done



Thank you for your attention!

For more information:
www.bit.ly/IGADreport2024



@fightfoodcrises @IGADsecretariat @FSIN_News